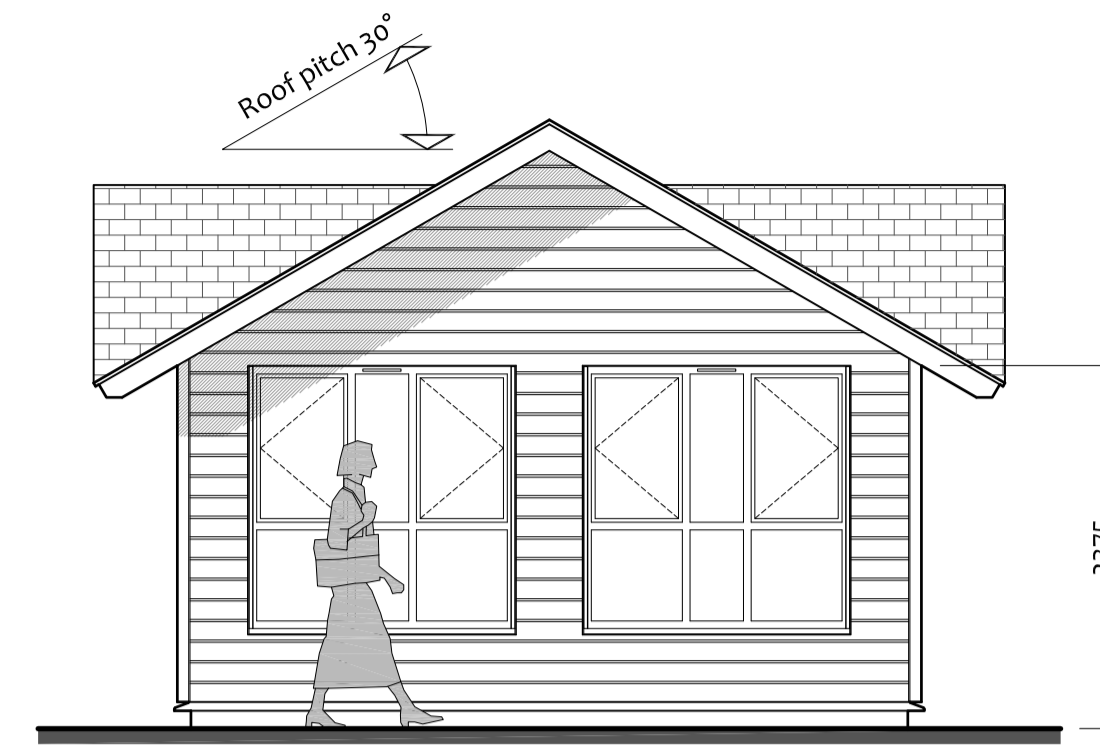


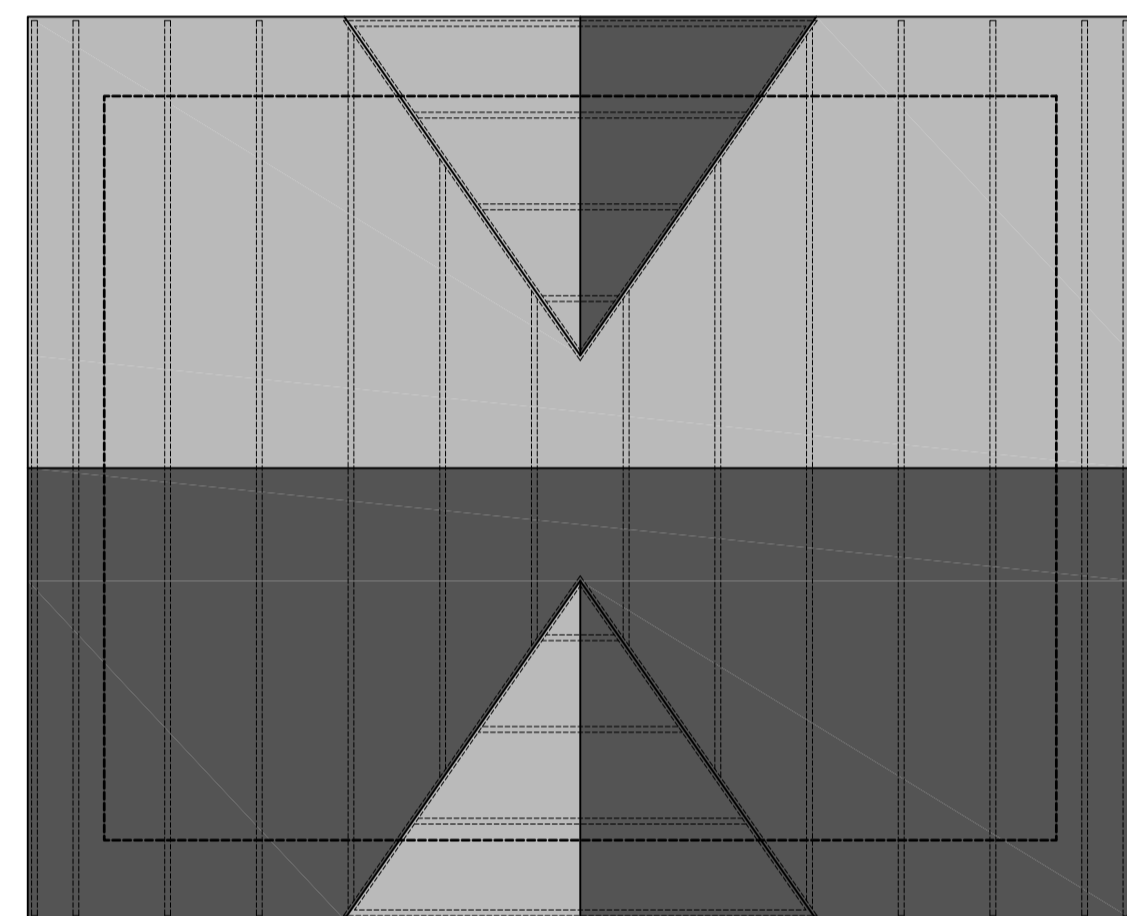
1 Ground Floor Plan
Scale: 1:50



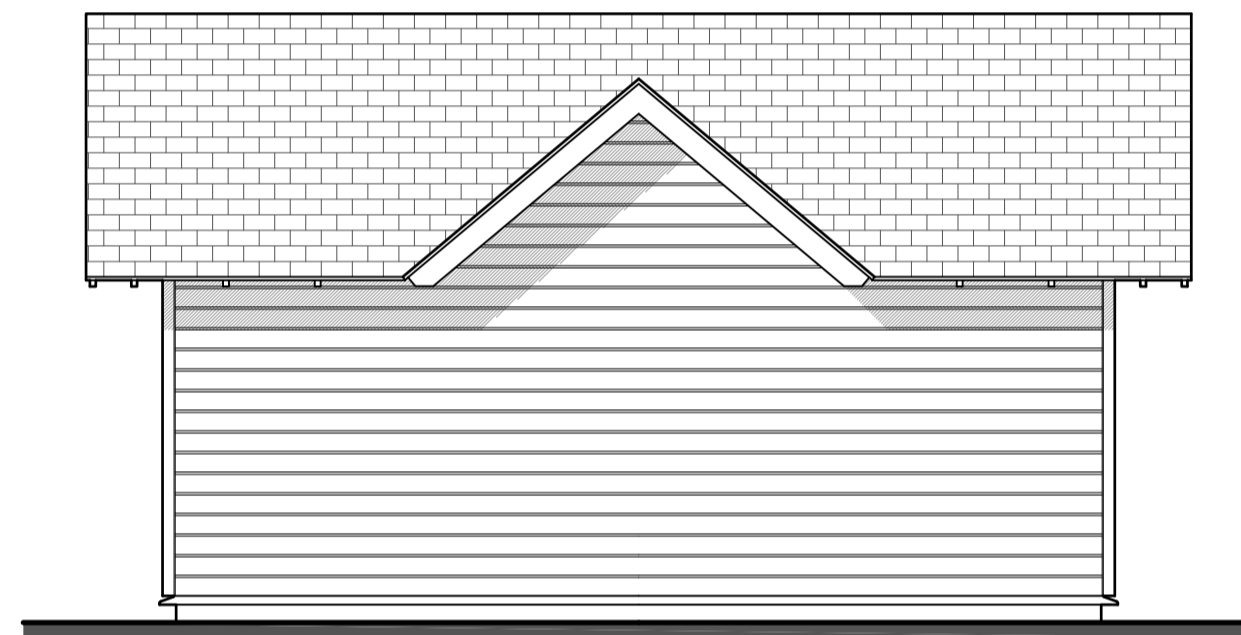
3 Front Elevation
Scale: 1:50



5 Side Elevation 1
Scale: 1:50



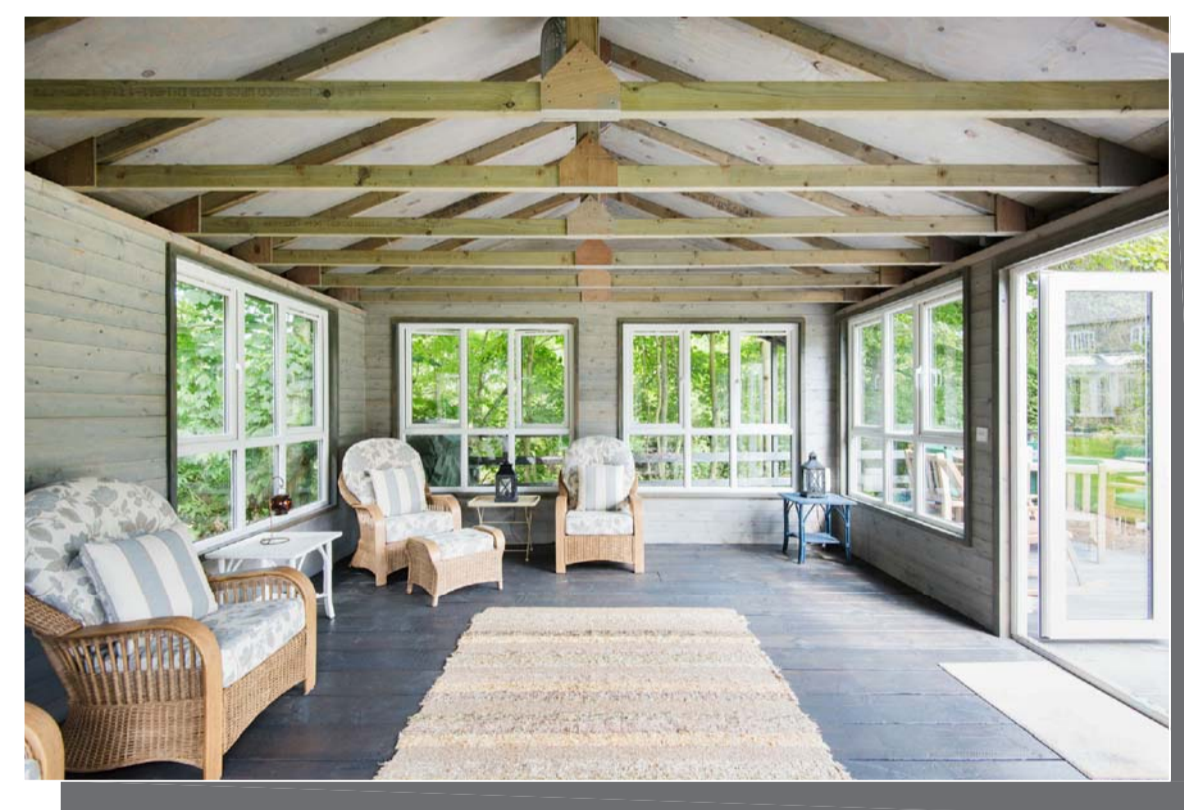
2 Roof Plan
Scale: 1:50



4 Rear Elevation
Scale: 1:50



6 Side Elevation 2
Scale: 1:50



SPECIFICATION

Structure:
Treated vertical timber battens @ 600mm ctrs (max), on treated timber battens @ 600mm ctrs, on Protect TF200 breather membrane, on 9mm thk ply sheathing board, 140mm timber frame studs (c/w 100mm thk Rockwool cavity wall batts within void), DuPont (or similar) Airguard vapour control layer with 12.5mm thk plasterboard and skim finish.

Wall Finish:
25x125mm untreated horizontal shiplap Western Red Cedar cladding.

Roof Finish:
Bituminous roof shingles comprising a reinforced, heavyweight glass fibre base, coated with oxidised bitumen, and an upper surface coated with coloured mineral granules.

Doors / Windows:
UPVC framed double glazed units.



huxmar
your ideas our inspiration

Summer House - Type 3